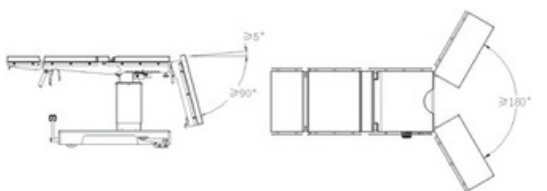
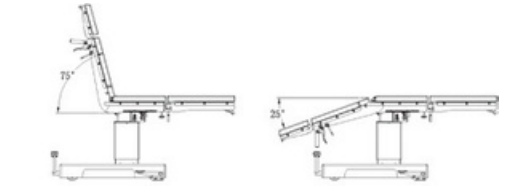
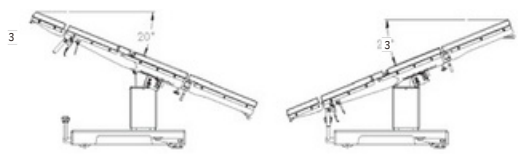
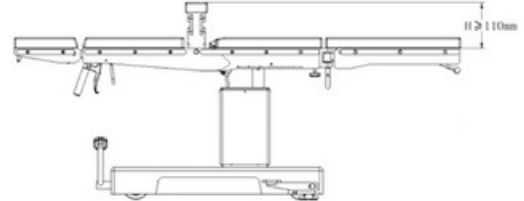
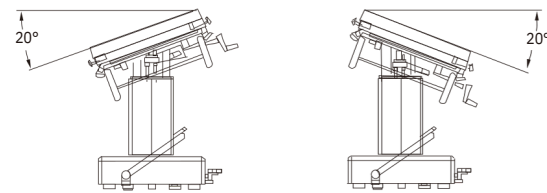
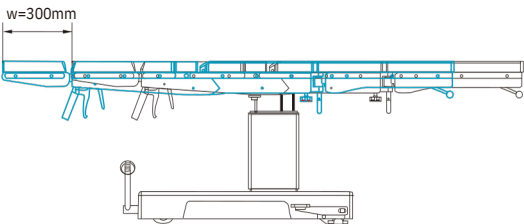
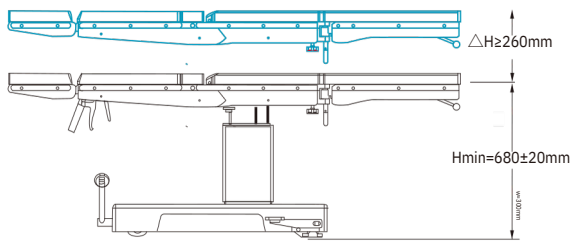


Стандартные аксессуары



Широкий диапазон регулировки положения подходит для большого количества требований хирургического отделения.

OP750 — это Операционный стол универсальный с электроприводом, полностью отвечающий различным запросам различных хирургических отделений. Он обеспечивает различные положения благодаря простому и точному управлению, обеспечивая безопасность и комфорт пациентов. Экономически эффективный OP750 с универсальностью — идеальный выбор для современной операционной.



Технические характеристики

Длина стола	2,020 мм
Ширина стола (без боковых ограждений)	520 мм
Высота стола (без матраса)	650 мм-940 мм
Тренделенбург/обратный	20°/20°
Боковой наклон (влево/вправо)	20°/20°
Спинная пластина вверх/вниз	75°/25°
Головная пластина вверх/вниз (съёмная)	30°/45°
Ножная пластина вверх/вниз (съёмная)	5°/90°
Ножная пластина раздельная (съёмная)	180°
Подъемник почечного моста вверх	110 мм
Продольное смещение	300 мм
Грузоподъемность	297 кг
Входная мощность (Гц)	AC 90V-264V 50/60



CORPORATE HEADQUATER
HEYER Medical AG
Carl-Heyer-Str. 1/3, 56130 Bad Ems,
www.heyermedical.cn

HEYER Medical AG
Carl-Heyer-Str. 1/3, 56130 Bad Ems, Germany
Tel.: +49 2603 791 0
Fax: +49 2603 791 200
info@heyarmed.com

HEYER Medical Co., Ltd.
No.10, Chaobai Street, Yanjiao Development Zone
065201, Sanhe City, Hebei, China
Tel: +86 10 5841 1198
Fax: +86 10 6371 8989
marketing@heyarmed.com

AOP750-2011



Aegistab OP750
Электрический
операционный стол



Optional Accessories

Features:

All table accessories are made of SUS304 stainless steel. All the surfaces are easy to clean and disinfect. With 6 standard and 13 optional accessories, the surgical bed can support a multitude of body positions and procedures, meeting the requirements of most surgeries.

121000347/121000348/ Foot plate (notched clamp)	121000349/ High position arm holder	121000351/ Connection bracket
* 121000350/121000351/ Head rest(connection bracket)	121000352/121000351/ Head plate(connection bracket)	121000353/ Hand operating table
121000354/ Instrument tray	121000355/ Iliac support	121000356/ Intervertebral pad
121000357/ Drainage bowl	* 121000358/ Orthopedics traction	121000360/ Infusion frame

Orthopedics Features

The orthopedics traction is designed based on EU's requirements, meeting the requirements of most orthopedics surgeries. All parts are made of SUS304 stainless steel with high strength. Therefore, the surgical table is very stable during surgeries and it is also X-ray and C-arm translucent.

Main structure of operating table is made of high-grade steel.
Base, column cover, accessories rails, and metal accessories are made of stainless steel.
Stable structure, nice shape, easy to clean

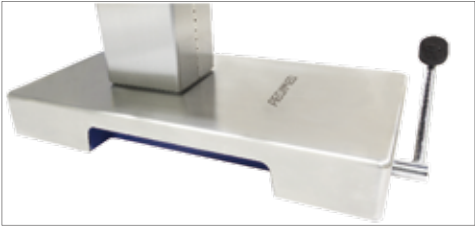
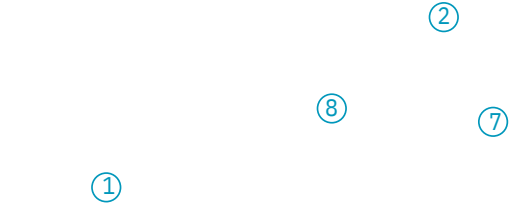
- ①
- Functions displayed below are controlled by imported cylinder: head plate up and down, trendelenburg and reverse trendelenburg, back plate up and down.
 - Easy to operate, accurate and stable positioning.



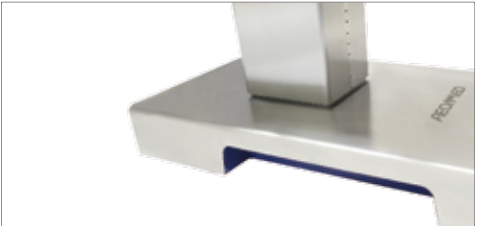
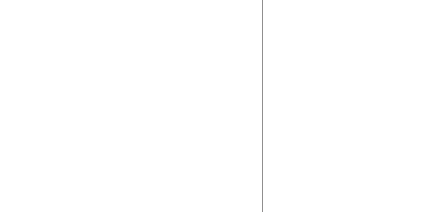
- ⑧
- Mattress is made of high density PU foam and is waterproof.
 - High elasticity and comfort.
 - Removable design, nice shape, easy to clean, excellent perspective of X-ray.



- ⑦
- Built-in X-ray film rail layer meets shooting request for different body parts during surgery.



- ⑥
- Operating table up and down controlled by foot-lift pump, an integration structure of oil pump, fuel tank and crank.
 - The integrate pump provides high stability of table during up and down operation and excellent carrying capacity.
 - Easy to operate, time-saving design.



- ⑤
- Reserved space for feet in base meets close working on operating table while ensuring stability.

- ②
- Built-in kidney-bridge can be elevated up to 110mm.
 - Provides displays requested by kidney and gallbladder surgery.



- ③
- Optional table longitudinal shift(up to 300mm) provides big enough space for X-ray work.



- ④
- Operating table is easy to fix and shift with simple and efficient base-lock system.